



# 2026 COUNTY OF ORANGE CAMPAIGN MANUAL

## **Campaign Finance & Ethics Commission**

Website: [ethics.oc.gov](https://ethics.oc.gov)  
Email: [info@ethics.oc.gov](mailto:info@ethics.oc.gov)  
Main: (714) 645 - 3844



## Table of Contents

<b>Introduction .....</b>	<b>2</b>
<b>Summary.....</b>	<b>2</b>
<b>Elections in 2026 .....</b>	<b>3</b>
Election Cycles 2026 Candidates.....	3
Post-Election Cycles for Candidates in November 2026 Runoffs.....	4
<b>Reporting of Campaign Activities .....</b>	<b>4</b>
Electronic Filing .....	4
Current and Cumulative Contributions .....	4
Notification & Return of Excess Contributions .....	5
Post-Election Campaign Statements .....	5
Amendments to Campaign Statements .....	5
<b>Restrictions on Candidates and Committees .....</b>	<b>5</b>
One Committee/Account Rule .....	5
Contribution Prohibition; Intra-Candidate Transfers.....	6
Monetary Limitation .....	6
Aggregation of Contributions.....	6
Information about Contributors.....	7
Property, Goods and Services .....	7
Loans.....	7
<b>General Obligations &amp; Bans .....</b>	<b>8</b>
Contributor Disclosure Obligation.....	8
Signature Solicitation Ban .....	8
Contribution Solicitation Ban .....	8
Contribution Transmittal Ban .....	8
Late Independent Expenditures .....	8
Independent Committees .....	9
<b>Slate Mailers .....</b>	<b>10</b>
<b>Consequences and Penalties .....</b>	<b>11</b>



---

## INTRODUCTION

On June 7, 2016, Orange County voters updated the County’s campaign finance laws via a ballot initiative sponsored by the Board of Supervisors and promoted by a long-time community activist. The Orange County Campaign Reform Ordinance places local rules and restrictions on campaign activity in addition to the requirements and regulations found in the California Political Reform Act (Gov. Code Sec. 81000 *et seq*). County candidates, elective county officers, and their controlled committees as well as individuals who support or oppose County candidates must comply with both California and County of Orange campaign laws.

The updated Campaign Reform Ordinance also established a Campaign Finance and Ethics Commission (“Commission”). One purpose of the Commission is to provide oversight of the County’s Campaign Reform Ordinance. As part of these duties, each year the Office of Campaign Finance and Ethics Commission develops a “plain language manual” to help individuals understand the Campaign Reform Ordinance. This manual summarizes and simplifies the Ordinance’s language and requirements, provides general instructions and assists in answering questions.

This manual is updated on an annual basis but may not provide answers to complicated factual scenarios or address recently enacted changes to the law. Thus, the manual should be considered **advisory only**. If you have questions about the contents of this manual or legal obligations under the Campaign Reform Ordinance, you should contact Commission staff by email, phone or mail:

Office of Campaign Finance and Ethics Commission  
1300 S. Grand Ave, Bldg. B, 3<sup>rd</sup> Floor  
Santa Ana, CA 92705  
714-645-3844  
[info@ethics.oc.gov](mailto:info@ethics.oc.gov)

## SUMMARY OF THE CAMPAIGN REFORM ORDINANCE

In general, the Orange County Campaign Reform Ordinance (“Ordinance”) establishes local contribution limits, restrictions on contributions, campaign reporting requirements and rules for slate mailers. The entire text of the Ordinance is found in the Orange County Codified Ordinances “OCCO” and is available to view at:

[https://library.municode.com/ca/orange\\_county/codes/code\\_of\\_ordinances](https://library.municode.com/ca/orange_county/codes/code_of_ordinances)

### WHO AND WHAT IS COVERED BY THE ORDINANCE?

The Ordinance applies to County Candidates which means any person who is a Candidate for the Board of Supervisors, Sheriff-Coroner, District Attorney-Public Administrator, Assessor, Treasurer-Tax Collector, County Clerk-Recorder, Auditor-



Controller, or Superintendent of Schools. It also applies to an Elective County Officer, which means any individual who is elected to such a position.

The Ordinance also applies to individuals/businesses who make campaign contributions to, in support of, or against County candidates and/or Elective County Officers. Finally, the Ordinance sets forth restrictions related to campaign activities on County property. This manual will try to provide plain language explanations of the rules found in the Ordinance.

## ELECTIONS IN 2026

In 2026, the following County offices are up for election:

1. County Supervisor – District 2
2. County Supervisor – District 4
3. County Supervisor – District 5
4. Auditor-Controller
5. Assessor
6. District Attorney-Public Administrator\*
7. Sheriff-Coroner\*
8. Treasurer-Tax Collector
9. County Clerk-Recorder
10. Superintendent of Schools

\*Due to a change in state law, elections for Sheriff and District Attorney now correspond to Presidential election years and will not occur until 2028.

### ELECTION CYCLE CALCULATION

Orange County campaign contribution limitations are associated with the dates of elections and their outcomes. The Ordinance defines election cycles in section 1-6-7. The Ordinance cannot give definitive dates for any particular election cycle due to factual differences and varying outcomes each election can present. In an effort to help understand election cycles, specific dates are presented below.

#### **1. Election Cycles for 2026 Candidates:**

The election cycle for 2026 candidates begins on the date they first formed their County committee and continues until 30 days after the June 2<sup>nd</sup> Primary Election (July 2, 2026). If any race requires a runoff, then the next election cycle for runoff candidates will start on July 3, 2026 and end on December 31, 2026. (If the candidate is an incumbent the



election cycle is based on the date of their previous win and can be obtained by contacting the Office of Campaign Finance and Ethics Commission.)

### **2. Post-Election Cycles for Candidates in November 2026 Runoffs**

If a candidate is successful in the November 2026 (General/Runoff) election, his or her next election cycle begins January 1, 2027 and runs until 30 days AFTER the next primary election for that same elective office. If a candidate was NOT successful in November 2026, the election cycle ends on December 31, 2026 and the committee should be redesignated per Government Code rules and regulations to avoid going into surplus status.

## **REPORTING OF CAMPAIGN ACTIVITIES**

The California Political Reform Act (Gov. Code § 81000 et.seq.) sets forth most of California's campaign reporting requirements. Candidates should refer to the "*Campaign Disclosure Manual 2*" for local candidates, published by the California Fair Political Practices Commission (FPPC). The manual is available on the FPPC's website at [www.fppc.ca.gov](http://www.fppc.ca.gov). Moreover, the FPPC does provide advice to individuals related to State campaign requirements via an advice line at (866) ASK-FPPC. Please note, the FPPC does not provide advice or enforcement of local campaign ordinances.

### COUNTY REPORTING REQUIREMENTS FOR CANDIDATES AND COUNTY OFFICERS

#### **1. ELECTRONIC FILING – OCCO §1-6-30**

The Ordinance requires any County Candidate/ Elective County Officer or their controlled committee(s), that receives contributions or loans of more than \$25,000 to electronically file all required disclosure forms with the Orange County Registrar of Voters. If a County Candidate/Elective County Officer does not meet the \$25,000 threshold, they may (and are encouraged to) file electronically.

For information related to electronic filing, please contact the Orange County Registrar of Voters at 714-567-7600 or at <https://ocvote.gov/about>

#### **2. CURRENT AND CUMULATIVE CONTRIBUTIONS – OCCO §1-6-25**

In addition to the reporting requirements under the California Political Reform Act, the County requires a candidate/committee to itemize contributions from a contributor totaling \$100 or more during a reporting period with that same contributor's total for the election cycle. Thus, when the \$100 threshold is reached a County candidate is required to fill in each of the columns in Schedule A to the Form 460. (See example below.)



**Schedule A  
Monetary Contributions Received**

Amounts may be rounded to whole dollars.

SCHEDULE A

Statement covers period from _____ through _____	<b>CALIFORNIA FORM 460</b> Page _____ of _____
I.D. NUMBER	

SEE INSTRUCTIONS ON REVERSE  
NAME OF FILER

DATE RECEIVED	FULL NAME, STREET ADDRESS AND ZIP CODE OF CONTRIBUTOR (IF COMMITTEE, ALSO ENTER I.D. NUMBER)	CONTRIBUTOR CODE *	IF AN INDIVIDUAL, ENTER OCCUPATION AND EMPLOYER (IF SELF-EMPLOYED, ENTER NAME OF BUSINESS)	AMOUNT RECEIVED THIS PERIOD	CUMULATIVE TO DATE CALENDAR YEAR (JAN. 1 - DEC. 31)	PER ELECTION TO DATE (IF REQUIRED)
		<input type="checkbox"/> IND <input type="checkbox"/> COM <input type="checkbox"/> OTH <input type="checkbox"/> PTY <input type="checkbox"/> SCC				

\*Forms can be found at the FPPC's website at: <http://www.fppc.ca.gov/forms.html>

**3. NOTIFICATION & RETURN OF EXCESS CONTRIBUTIONS – OCCO §1-6-28**

Another County reporting requirement is triggered upon discovery of an excess contribution. (Contribution limits are discussed below in the section entitled "RESTRICTIONS".) If a candidate discovers s/he received an excess contribution, the excess amount must be returned to the contributor within seven (7) days of the discovery AND notification of the refund must be provided to the Orange County Registrar of Voters within 72 hours of the return. The notice to the Registrar of Voters shall include the donor's name, the amount returned and the date of the return.

**4. POST-ELECTION CAMPAIGN STATEMENTS – OCCO §1-6-26**

No later than fifteen (15) days following an election, a candidate must file a post-election campaign statement covering the period from the last pre-election statement through the tenth (10th) day following the election. This post-election campaign statement shall be filed on a Form 460 or other applicable form as required by the FPPC. The post-election statement is a County requirement and is in addition to those found in the Government Code. The Form 460 is found on the FPPC website.

**5. AMENDMENTS TO CAMPAIGN STATEMENTS – OCCO §1-6-27**

If the Orange County Registrar of Voters informs a candidate in writing that a previously filed campaign statement must be amended, the amendment must be filed within 30 calendar days of the notification.

**RESTRICTIONS ON CANDIDATES AND COMMITTEES**

ACCOUNT/COMMITTEE RULES

**1. ONE COMMITTEE/ACCOUNT RULE – OCCO §1-6-8**

Each County Candidate or an Elective County Officer may have only one (1) campaign committee that shall have only one (1) bank account out of which all qualified campaign



and officeholder expenses related to that County office shall be made. This one committee/account rule does not apply to a legal defense fund account (see OCCO 1-6-11.1). Nor does this rule prevent a County Candidate or an Elective County Officer from establishing a separate committee, with its associated bank account, for the purpose of running for another County office as long as the first bank account is closed within 60 days of establishing a second bank account.

### **2. CONTRIBUTION PROHIBITION; INTRA-CANDIDATE TRANSFERS – OCCO §1-6-9**

The committees controlled by County Candidates or Elective County Officers may not accept contributions from any other committees controlled by another federal, state, or local candidate or officeholder. Moreover, a County Candidate/Elective County Officer's committee may not make a contribution to a County Candidate/Elective Officer or to a committee that supports or opposes a County Candidate.

However, a County Candidate may transfer funds from their own state or local controlled committees subject to applicable rules and regulations. Additionally, a County Candidate or Elective County Officer may transfer money from a county committee to another controlled committee established for a different County office. Please note, if funds are being transferred to a new committee the rules established in §1-6-9 (c) and 1-6-8 must be followed.

There are no County limits on the personal funds used by a County candidate/Elective County Officer in an election and a County candidate/Elective County Officer may use personal funds to support other County candidates.

### **CONTRIBUTION RULES**

#### **1. MONETARY LIMITATION - OCCO §1-6-5**

As of April 10, 2025, the Orange County contribution limit is \$2,700 per election cycle. The previous limit in effect until April 9, 2025 was \$2,500 per election cycle. The Orange County Board of Supervisors can adjust this amount in February of each odd numbered year. (OCCO §1-6-21.) Notice of limitation increases are posted on OCETHICS.COM once final.

PLEASE NOTE – As of January 1, 2023, the Levine Act now applies directly to elected local officials. This office does not provide advice related to the application of this restriction. You may contact the FPPC (see In re:Kendrick) or contact the candidate directly.

#### **2. AGGREGATION OF CONTRIBUTIONS – OCCO §1-6-5**

Contributions from the following persons shall be aggregated and may not exceed the maximum per election cycle contribution limit:



- 
- a. A sponsored committee and the sponsors.
  - b. Two or more entities if any of the following apply:
    - a. Share a majority of board members.
    - b. Share two (2) or more officers.
    - c. Owned or controlled by the same majority shareholder/s.
    - d. Have a parent-subsiary relationship.
  - c. An individual and any general or limited partnership in which the individual has a ten (10) percent or more share.
  - d. An individual and any corporation in which the individual owns a controlling interest (fifty (50) percent or more).
  - e. A business who provides a contribution and any individual connected with the business who participates in or controls the decision on whether a candidate receives a contribution.
  - f. Contributions by children under eighteen (18) years of age are presumed to be contributions from his/her parents or legal guardian(s). The contribution is allocated equally to each living parent or living guardian.

### **3. INFORMATION ABOUT CONTRIBUTORS – OCCO §1-6-14**

No campaign contribution of \$100 or more can be deposited into a campaign account unless the following information is known and on file with the recipient:

- a. all information required by the Political Reform Act;
- b. name, address, occupation and employer;
- c. if self-employed- the name under which the person is “self-employed.”

If the required information cannot be obtained within sixty (60) days of receipt of the contribution or by the end of the next filing period, whichever occurs last, the contribution must be returned to the contributor. If the contributor cannot be located, the contribution shall be deposited in the Orange County General Fund or transferred to a charity that is exempt from taxation under Section 501(c)(3) of the Internal Revenue Code.

### **4. PROPERTY, GOODS AND SERVICES – OCCO §1-6-11**

Any funds, property, goods or services, other than government funds, received by Elective County Officers or County Candidates which are used, or are intended by the donor or by the recipient to be used, for expenses related to holding Elective County Office or running for Elective County Office, are campaign contributions and subject to the limitations. Reimbursement for reasonable travel expenses related to holding Elective County Office are not contributions.

### **5. LOANS – OCCO §1-6-10**

Loans are considered contributions if used or intended for use in campaigns and for holding public office. The loans are contributions, subject to the contribution limit and attributed to the maker and/or guarantor. The following rules apply to loans:



- a. All loans must be in writing and disclosed with the campaign statement on which the loan is first reported;
- b. Proceeds of a loan that are from a commercial lender are not contributions if the terms are the same as the public is offered in the regular course of business (guarantor still held to contribution limit);
- c. Extensions of credit for a period of more than thirty (30) days are subject to the contribution limitations of this division if not in the normal course of business.

## GENERAL OBLIGATIONS & BANS

### 1. CONTRIBUTOR DISCLOSURE OBLIGATION – OCCO §1-6-24

Any person whose contribution is subject to aggregation must disclose the prior contribution with which a contribution is aggregated. The notice must be done in writing to the County Candidate or Elective County Officer, or to his or her campaign committee.

### 2. SIGNATURE SOLICIATION BAN – OCCO §1-6-31

No County employee shall be solicited at his or her workplace for his or her signature on election nomination papers for any local, state or federal office. This does not stop nomination forms from being presented in areas that are considered “public forums.”

### 3. CONTRIBUTION SOLICIATION BAN – OCCO §1-6-12

Non-elected County Public Officers or County employees may not solicit, direct or receive contributions from individuals or their agents who have actions pending before them or have had actions pending before them in the preceding twelve (12) months. The exception is when a non-elected County Public Officer or County employee is a County Candidate acting in furtherance of his or her own controlled committee.

### 4. CONTRIBUTION TRANSMITTAL BAN – OCCO §1-6-13

No person shall receive, personally deliver, or attempt to deliver a contribution in any County office.

### 5. LATE INDEPENDENT EXPENDITURES – OCCO §1-6-23

Any person who spends one thousand dollars (\$1,000.00) or more in support of or in opposition to any County Candidate(s) within 90 days of an election shall notify all candidates running for that same office at least twenty-four (24) hours prior to the first publication, distribution, or broadcast of the independent expenditure communication.



---

The Notice of the Late Independent Expenditure must be sent by personal delivery, telegram, facsimile, or by any other electronic means and shall include a copy of the “independent expenditure” communication.

**6. INDEPENDENT COMMITTEES - OCCO §1-6-6**

A Committee that supports or opposes a candidate for County office may not have a majority of its officers/individuals who serve as the majority of officers on any other committee that supports or opposes the same candidate.

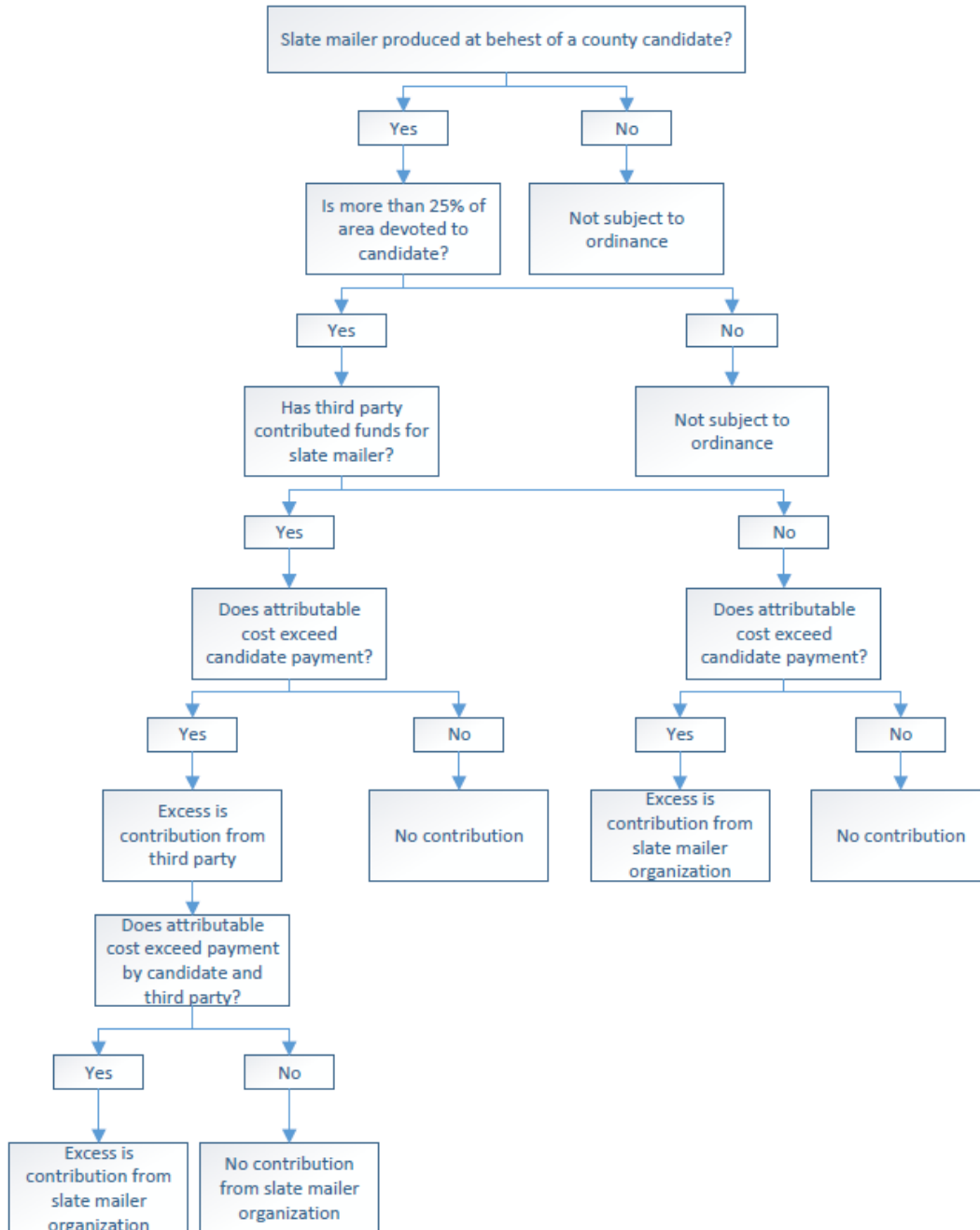
In addition, such a committee shall not act in concert with, solicit or make contributions on behalf of any other committee.

*[intentionally left blank]*



# SLATE MAILERS

Mailed literature distributed by a Slate Mailer Organization at the request of a candidate can be considered a contribution under the Ordinance. Please follow the flow chart below to determine if the Ordinance applies or if there has been a contribution under the facts of any particular slate mailer. **OCCO § 1-6-22**





---

## CONSEQUENCES AND PENALTIES

Consequences for violating any provisions of the Ordinance can be both administrative and criminal. The County of Orange has four (4) years after the date of the violation to commence a civil and/or criminal action. Violators can be ordered to pay monetary penalties of up to \$5,000 for each violation or three times the amount that the violator failed to report properly or unlawfully contributed, expended, gave or received, whichever is greater. Moreover, any individual who knowingly submits a false claim of a violation under the Ordinance can also be held criminally liable. See OCCO § 1-2-362, 1-6-15, 1-6-17 and 1-2-361.

To avoid consequences and penalties, you may contact the Office for advice:

Office of Campaign Finance and Ethics Commission  
1300 S. Grand Ave, Bldg. B, 3<sup>rd</sup> Floor  
Santa Ana, CA 92705  
714-645-3844  
[info@ethics.oc.gov](mailto:info@ethics.oc.gov)